

# LEAF NO TREE UNNOTICED

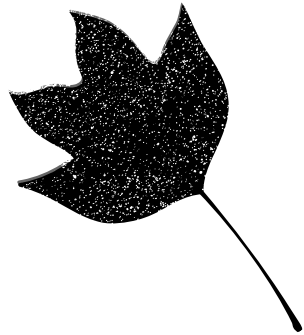
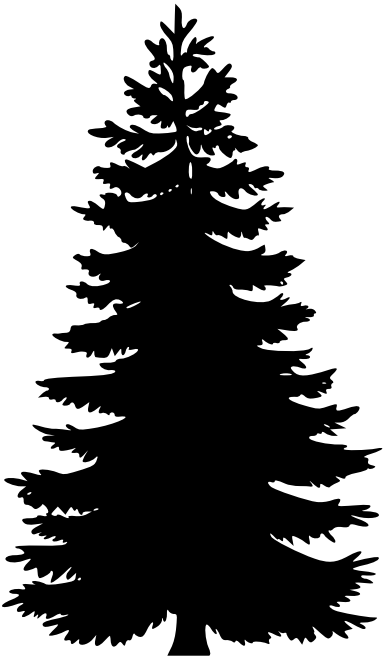
Grab a crayon and take to the woods, get a rubbing of bark and leaves to help you remember some native trees

Look up high!  
Look down low!  
Explore the park,  
and learn as you go!



## This Booklet Belongs To:

---



**Completed your booklet?**

**Remember:  
learning about trees  
and nature doesn't  
stop here. Every  
season brings new  
changes, so keep  
exploring and see  
what else you can  
discover!**



# Notes:

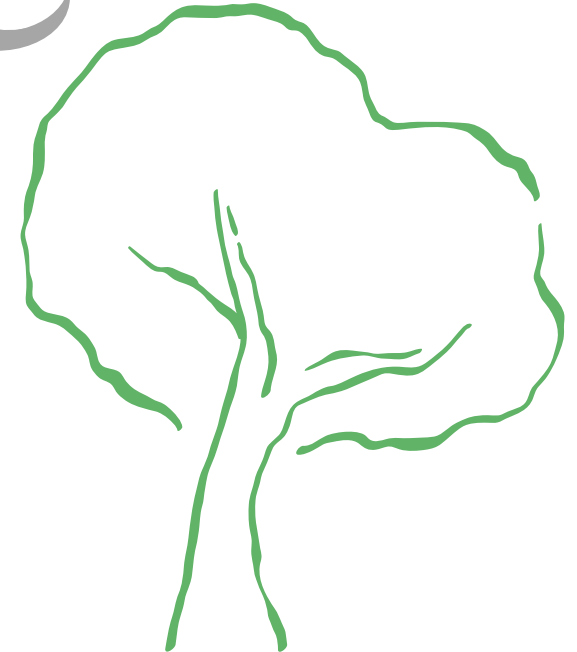
**Stay on marked trails!**



**PLEASE  
REMEMBER!**

**Avoid picking items to  
complete your rubbings!**

**Leave No Trace!**



# Red Oak

**Leaf**



**Sycamore leaves are very large and have 3-5 lobes with tooth like edges. This tree produces ball shaped fruit that hang on long stalks. Sycamores often shed their bark due to new growth pushing off the old growth.**

**Bark**

# Sycamore

**Leaf**



The Northern Red Oak has 7-11 lobed pointy leaves. Its bark is dark reddish brown. It can grow about 2 feet a year. They also produce acorns.

**Bark**

# White Oak



The Tulip Poplar is not even a real poplar. It is part of the magnolia family instead. You can identify this tree by its very straight trunk and 4 lobed tulip shaped leaves.

## Leaf

## Bark

# Tulip Poplar

**Leaf**



**White oak trees can live for centuries. They produce acorns and have leaves with 7-10 rounded lobes. Acorns are not only a food source for critters, but also a way for seed dispersal.**

**Bark**

# Beech

**Leaf**



Maple trees have opposite branching and simple leaves with 3-5 lobes. They also have “helicopter seeds” called samaras. It takes a **LARGE** amount of maple sap to make syrup. Usually **40** gallons of sap for 1 gallon of syrup.

**Bark**

# Maple

**Leaf**



**The Beech tree can be identified by its smooth bark and oval leaves with wavy edges. The beechnuts it produces are eaten by many animals including raccoon, fox, and even bear.**

**Bark**

# Dogwood



**The Dogwood is Virginia's state tree! You can identify this tree by its oval shaped leaves and white flowers, or by its bark, which is blocky, resembling an alligator. A fun tip to remember is 'you can always identify a dog by its bark.'**

## Leaf

## Bark